

# How to use the Smart Recycling Box

Step 1:

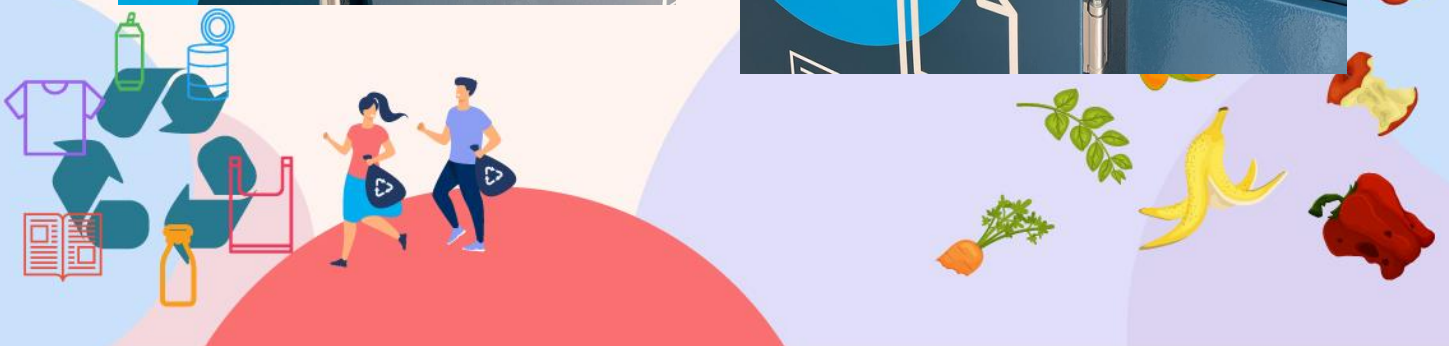
Scan the QR code from your mobile APP



Step 2:

Read and follow the instruction on the machine screen.

- Choose the item that you want to recycle.
- Top hatch of the machine will be open.



## Step 2:

Read and follow the instruction on the machine screen.

- **Drop in your item.**
- **Press completed when you're done.**
- **Press end deposit if you have no more recycling item to recycle.**





Lastly, the machine will show you the number of reward points given and the total point in your account.

